



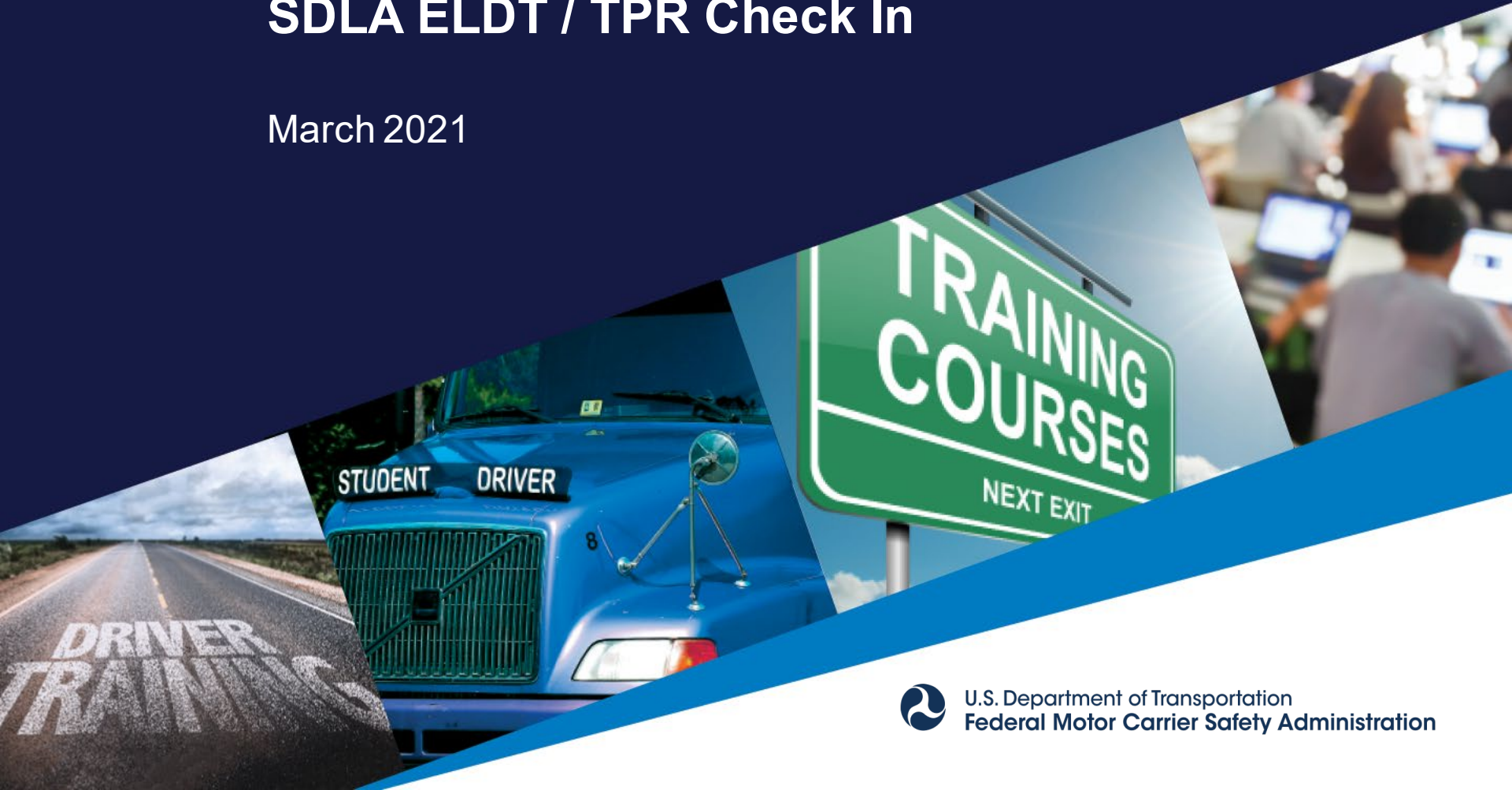
# TRAINING

## PROVIDER REGISTRY

---

### SDLA ELDT / TPR Check In

March 2021



U.S. Department of Transportation  
Federal Motor Carrier Safety Administration

---

## Presenters

- Nikki McDavid  
Chief, Commercial Driver's License Division
- Joshua Jones  
Commercial Driver's License Division
- TPR Technical Team
  - Andrew Nagel
  - Walt Zak

---

# Agenda

- 1 ELDT APPLICABILITY**  
Which entry-level drivers are subject to the ELDT requirements?
- 2 TRAINING PROVIDER UPDATES**  
Updates on the latest resources and support for training providers.
- 3 RESOURCES FOR STATES**  
What materials can FMCSA provide that would help States prepare for the ELDT compliance date?
- 4 TPR WEB SERVICE UPDATE**  
TPR Web Services testing is now live, and an updated Web Services Developers Handbook is now available.
- 5 STATE REPORT-OUT**  
What actions has your State taken since the last check-in webinar?
- 6 Q&A AND CONTACT INFO**  
What questions do you need answered to continue your progress? Plus, how you can get help.

---

## Roll Call

- Let us know who is on the line
  - Use the chat pod to tell us your name and your role



## For complete State requirements see:

- Part 383—Commercial Driver's License Standards; Requirements and Penalties
  - § 383.71 Driver application and certification procedures
  - § 383.73 State procedures
- Part 384—State Compliance with Commercial Driver's License Program
  - § 384.230 Entry-level driver certification
  - § 384.235 Entry-level driver training provider notification
  - § 384.301 Substantial compliance—general requirements



# ELDT Applicability



## ELDT Compliance Date February 7, 2022

- Drivers holding a CLP prior to the compliance date may obtain a CDL without completing entry-level training.
- If the CLP obtained prior to the compliance date, or renewed CLP, expires prior to obtaining a CDL, the driver would be subject to ELDT requirements for Class A or Class B CDL.
- If a driver holds S, P, or H endorsements prior to the compliance date, the driver is not subject to the ELDT requirements for the endorsement(s).
- Drivers who obtain a CLP on or after the compliance date are subject to ELDT regulations for CDLs.
- Drivers who apply for a S, P, or H endorsement after the compliance date are subject to ELDT requirements for those endorsements.

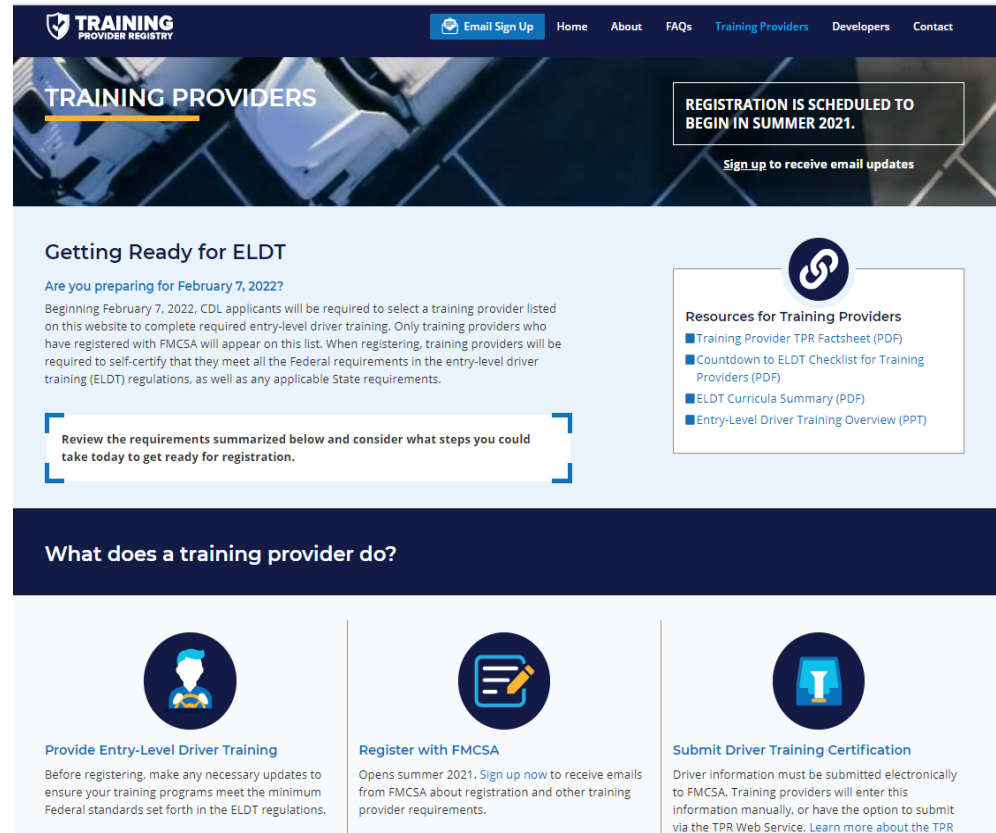
---

## Resources from FMCSA Training Providers

- “Get Ready” webinar for training providers
  - Held on March 4
  - Approx. 670 attendees
  - Webinar recording:  
<https://connectdot.connectsolutions.com/pj2txx8m1ele/>

# Resources from FMCSA Training Providers

- New page on TPR website where training providers can:
  - Learn about requirements they must meet to be eligible for listing on the Training Provider Registry.
  - Get prepared for registration (coming summer 2021).
  - Download resources (more coming soon).



The screenshot shows the Training Provider Registry website. The header includes the logo and navigation links: Email Sign Up, Home, About, FAQs, Training Providers, Developers, and Contact. The main banner features the title 'TRAINING PROVIDERS' and a call to action: 'REGISTRATION IS SCHEDULED TO BEGIN IN SUMMER 2021. Sign up to receive email updates'. Below the banner, there's a section titled 'Getting Ready for ELDT' with a sub-header 'Are you preparing for February 7, 2022?'. The text explains that starting February 7, 2022, CDL applicants will need to select a training provider listed on the website to complete required entry-level driver training. A callout box encourages users to review requirements and consider steps for registration. To the right, a box titled 'Resources for Training Providers' lists links to a Training Provider TPR Factsheet (PDF), Countdown to ELDT Checklist for Training Providers (PDF), ELDT Curricula Summary (PDF), and Entry-Level Driver Training Overview (PPT). Below this, a section titled 'What does a training provider do?' features three icons and descriptions: 'Provide Entry-Level Driver Training' (Before registering, make any necessary updates to ensure your training programs meet the minimum Federal standards set forth in the ELDT regulations.), 'Register with FMCSA' (Opens summer 2021. Sign up now to receive emails from FMCSA about registration and other training provider requirements.), and 'Submit Driver Training Certification' (Driver information must be submitted electronically to FMCSA. Training providers will enter this information manually, or have the option to submit via the TPR Web Service. Learn more about the TPR).

<https://tpr.fmcsa.dot.gov/Provider>



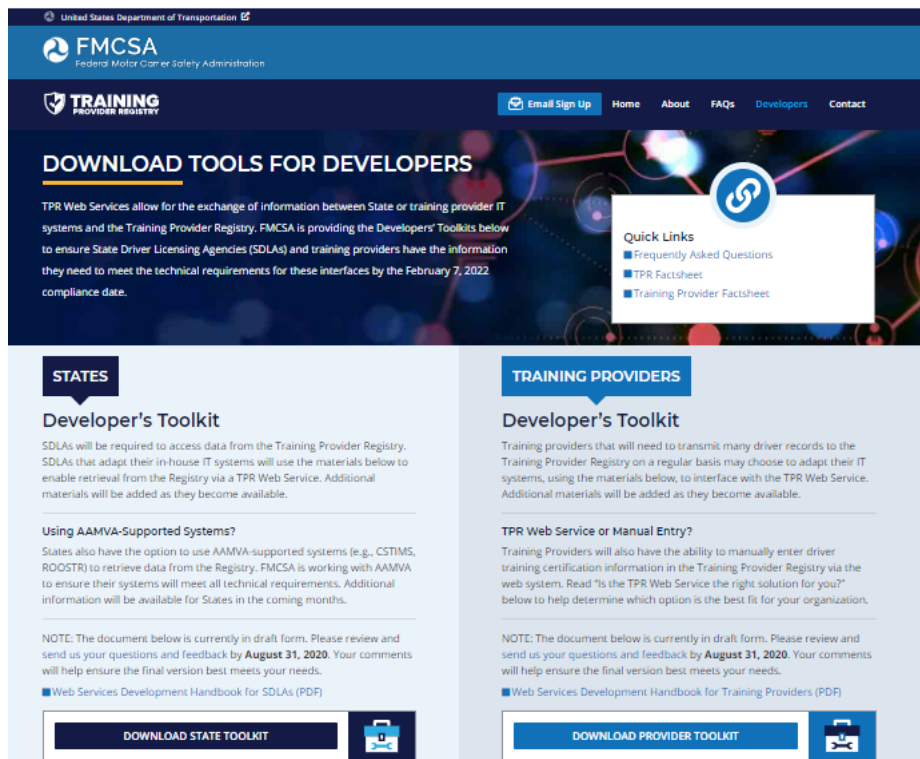
## Resources from FMCSA States

- Currently available:
  - Training Provider Registry factsheet
  - TPR Training Provider factsheet
  - SDLA regulation reference guide
  - ELDT Outreach PowerPoint template
  - SLDA/Division Resources page:  
<https://tpr.fmcsa.dot.gov/Resource/Open/SDLA-resources>
- Proposed/in progress:
  - “Countdown to ELDT” checklist for SDLAs
  - ELDT insert for State CDL manuals
- Discussion: What else would you like from FMCSA?

# Resources from FMCSA

## States Connecting Directly to TPR Web Service

- Training Provider Registry Developer's Toolkit (<https://tpr.fmcsa.dot.gov/DeveloperToolkit>)
  - Updated (January 2021): Web Services Development Handbook for SDLAs version 1.1
- Testing support (testing is now live)
- Access to Registry developers for questions and troubleshooting



The screenshot shows the FMCSA Training Provider Registry Developer's Toolkit page. The header includes the FMCSA logo and navigation links: Email Sign Up, Home, About, FAQs, Developers, and Contact. The main heading is "DOWNLOAD TOOLS FOR DEVELOPERS". Below this, a paragraph states: "TPR Web Services allow for the exchange of information between State or training provider IT systems and the Training Provider Registry. FMCSA is providing the Developers' Toolkits below to ensure State Driver Licensing Agencies (SDLAs) and training providers have the information they need to meet the technical requirements for these interfaces by the February 7, 2022 compliance date." A "Quick Links" box on the right contains links to "Frequently Asked Questions", "TPR Factsheet", and "Training Provider Factsheet". The page is divided into two columns: "STATES" and "TRAINING PROVIDERS". The "STATES" column features a "Developer's Toolkit" section with text about SDLAs, a "Using AAMVA-Supported Systems?" section, and a "NOTE" about draft documents. It includes a "DOWNLOAD STATE TOOLKIT" button. The "TRAINING PROVIDERS" column features a "Developer's Toolkit" section with text about training providers, a "TPR Web Service or Manual Entry?" section, and a "NOTE" about draft documents. It includes a "DOWNLOAD PROVIDER TOOLKIT" button.

---

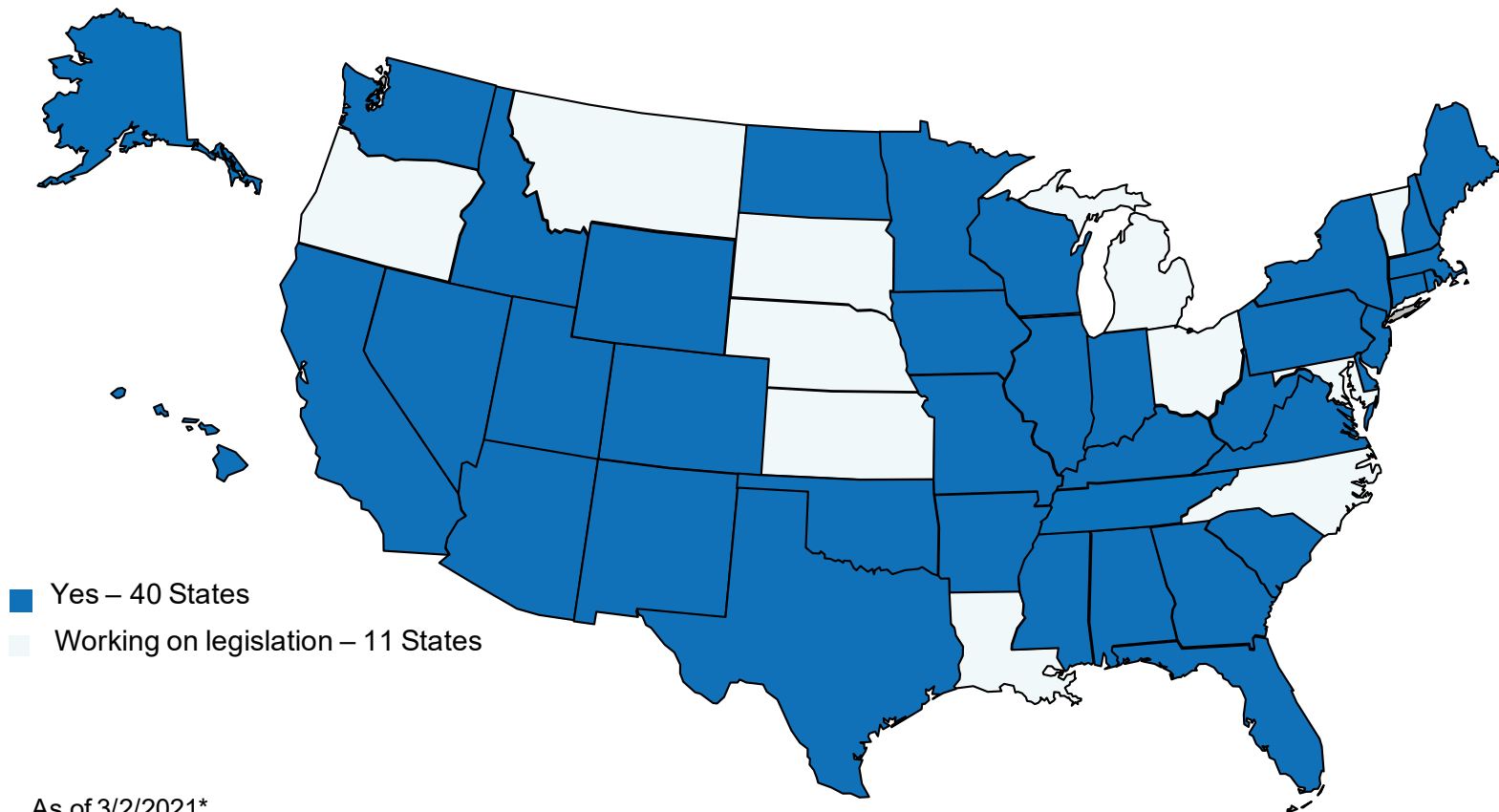
# Countdown to ELDT

## What should States do now to prepare for February 7, 2022?

- Explore options for which IT solution you will use to retrieve data from the Training Provider Registry
- Obtain legislative authority to enforce ELDT regulations in your State
- Begin planning to inform and train all skills examiners, including third-party examiners

# State Update: Legislative Authority

- Has the State obtained legislative authority?



As of 3/2/2021\*

\*Alaska, Arizona, and Tennessee enacted legislation since last briefing

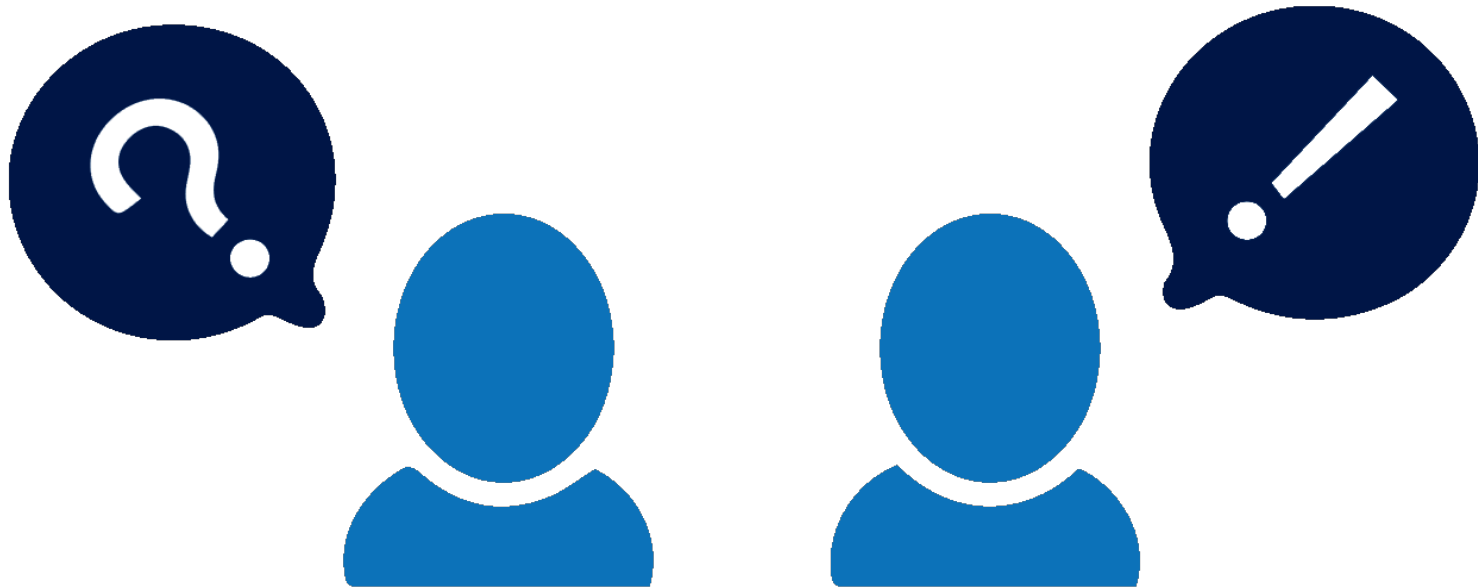
## State Report-Out

- What have you done so far?
- What do you plan to do next?
- What obstacles/roadblocks do you anticipate?
- What do you need from FMCSA?



---

## Q&A



## Where can I get additional details about the rule?



To learn more about ELDT and the Training Provider Registry, visit:

<https://tpr.fmcsa.dot.gov>



**You may also contact:**

Josh Jones | [Joshua.jones@dot.gov](mailto:Joshua.jones@dot.gov)

Philip Hadwin | [Phadwin@aamva.org](mailto:Phadwin@aamva.org)

TPR Team

<https://tpr.fmcsa.dot.gov/#contact>

---

## Recap: Entry-Level Driver Training (ELDT) Final Rule

- Compliance Date: **February 7, 2022**
- Published in 2016, mandated by MAP-21\*
- Set a Federal standard for mandatory training of entry-level drivers
  - Established minimum requirements for which entry-level drivers and training providers must meet
  - States may have requirements that exceed Federal requirements
- Established need for the Training Provider Registry

\*[subsequently updated](#)



---

## Recap: Entry-Level Drivers

The ELDT regulations establish new minimum training standards for entry-level drivers. This includes individuals applying for:

A Class A or Class B commercial driver's license (CDL) for the first time

---

An upgrade of an existing Class B CDL to a Class A CDL

---

A hazardous materials (H), passenger (P), or school bus (S) endorsement for the first time

---

- The rule does not cover individuals for whom States have waived the CDL skills test under 49 CFR 383 (§[383](#)) ([www.eCFR.gov](http://www.eCFR.gov)).

# How does the Training Provider Registry support ELDT?



## Search

### **DRIVER**

selects registered training provider from list on Training Provider Registry, completes training



## Submit

### **TRAINING PROVIDER**

electronically submits driver training data to Training Provider Registry



## Retain

### **FMCSA**

retains driver data in Training Provider Registry



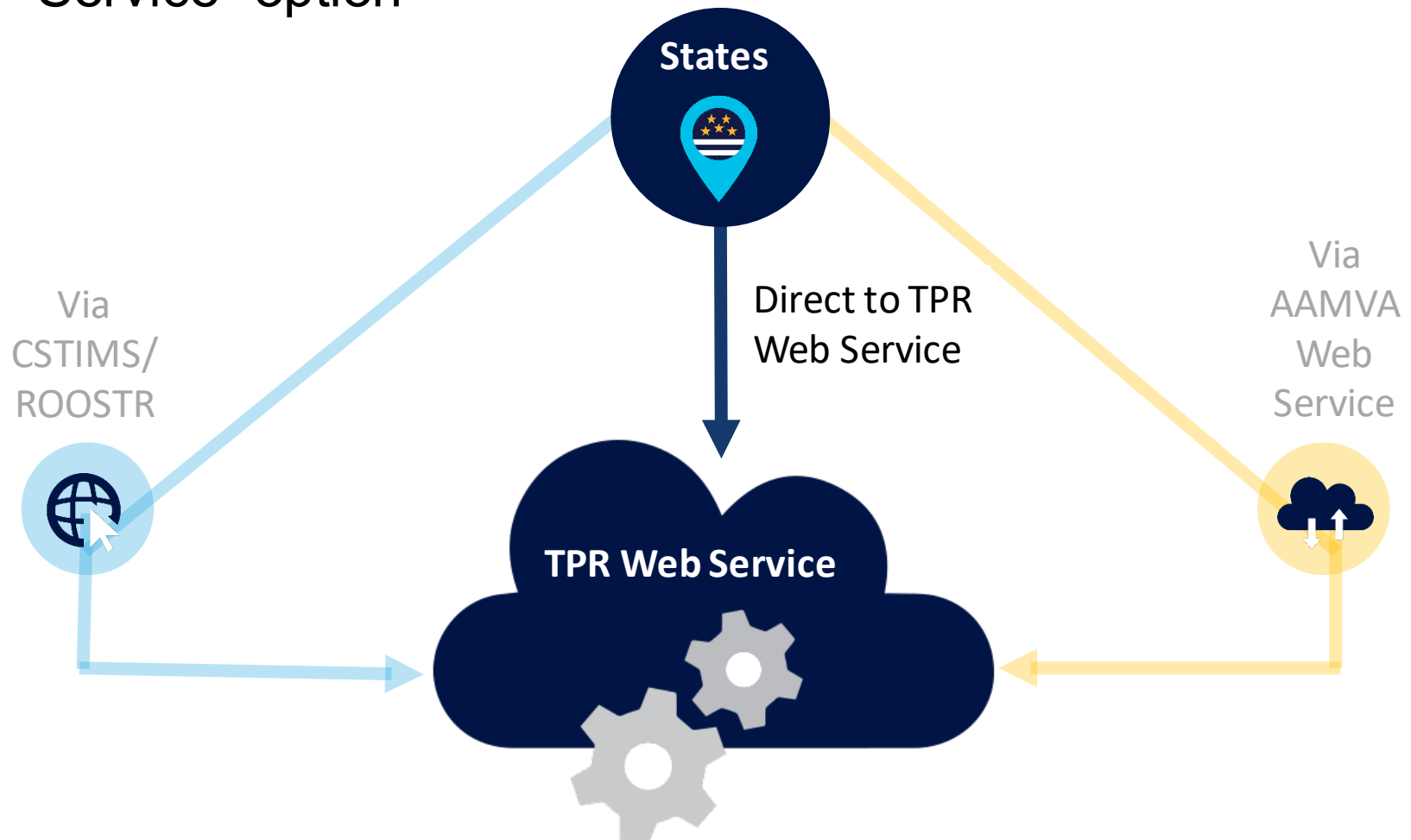
## Retrieve

### **STATE**

retrieves driver data from Training Provider Registry

# Update: Web Service Testing

Web Services Testing applies to “direct to TPR Web Service” option



## Testing Services Now Available

- Test credentials will be provided on the Developer's Toolkit page of the TPR website
  - States will not need to register with the TPR to perform system integration testing, though registration will be required to receive non-test credentials. Registration is scheduled to open in summer 2021.
- Users will be able to use these test credentials to submit test requests to the real service endpoints and receive simulated responses
- Testing services are now available

