



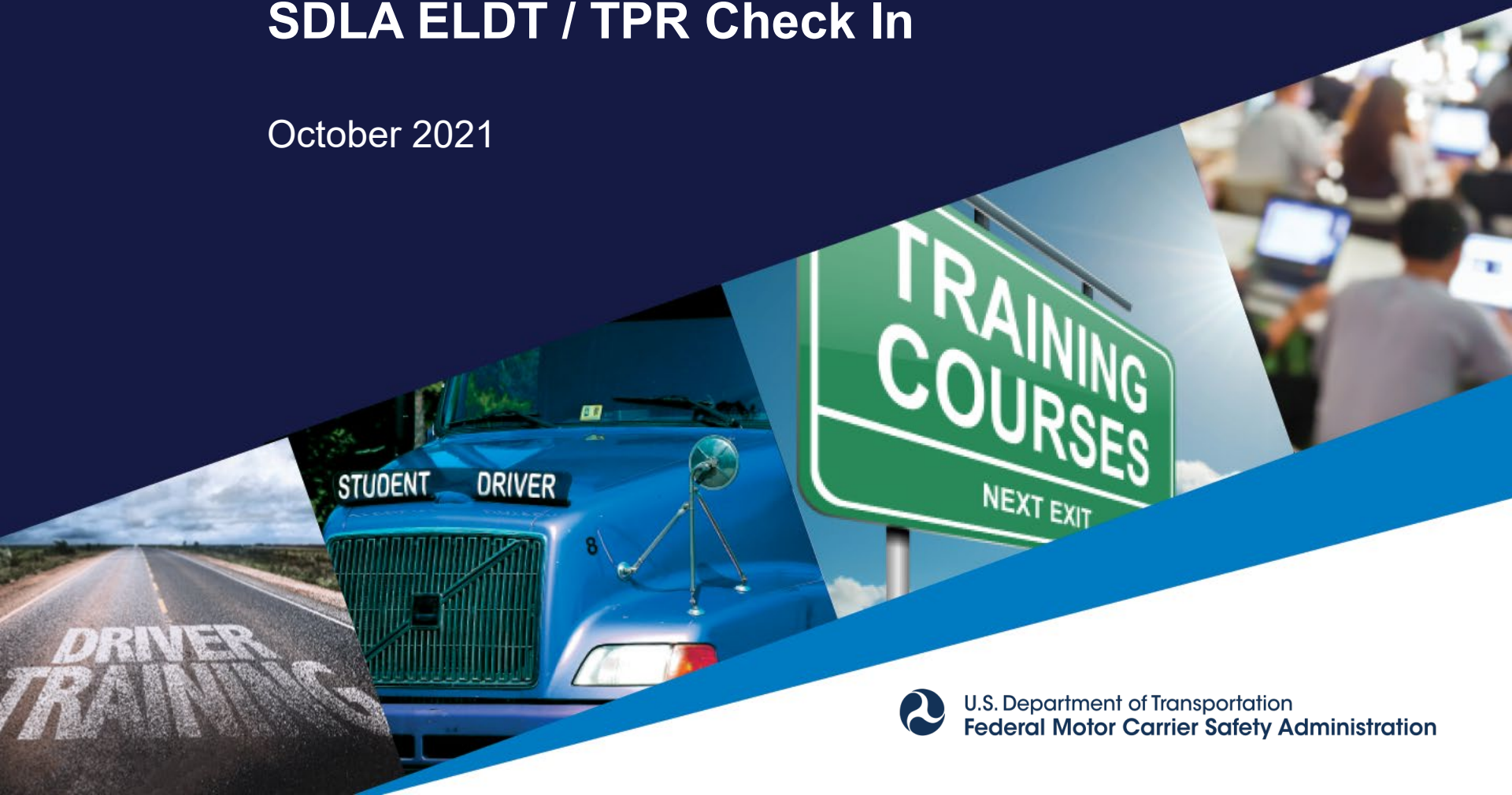
# TRAINING

## PROVIDER REGISTRY

---

### SDLA ELDT / TPR Check In

October 2021



U.S. Department of Transportation  
Federal Motor Carrier Safety Administration

---

## Presenter

- Joshua Jones  
Commercial Driver's License Division, FMCSA

---

# Agenda

- 1 PROGRAM UPDATES**  
Training provider registration opened in June 2021, recap ELDT discussion from CDL Coordinators Conference.
- 2 IT UPDATE**  
Upcoming release will include process for SDLAs to download credentials for connecting to the TPR Web Service.
- 3 OUTREACH EFFORTS**  
Update on FMCSA's outreach to training providers and drivers, including new materials for SDLAs.
- 4 STAFF TRAINING**  
How will you ensure your staff are knowledgeable about new scheduling and testing procedures come Feb. 7?
- 5 STATE REPORT-OUT**  
What actions has your State taken to prepare for ELDT compliance since the last webinar?
- 6 Q&A AND CONTACT INFO**  
What questions do you need answered to continue your progress? Plus, how you can get help.

---

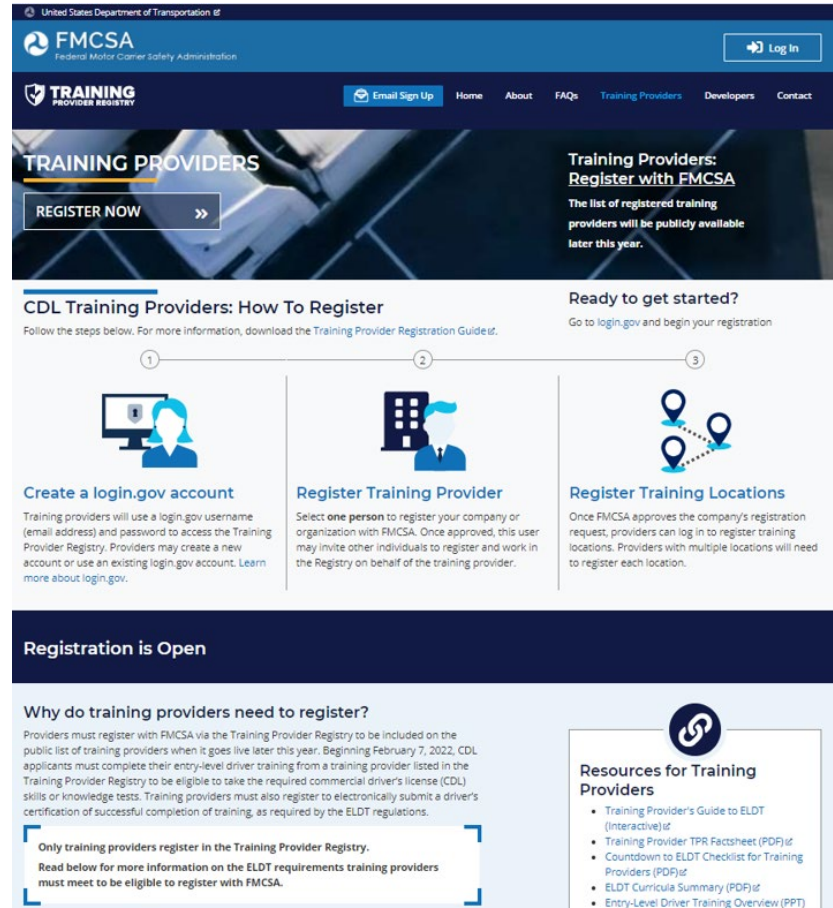
## Roll Call

- Let us know who is on the line
  - Use the chat pod to tell us your name and your role



# Program Update: Registration

- Opened in June 2021
  - Training providers can visit the Training Provider Registry website to register with FMCSA.
  - Instructions, including a downloadable guide, are on the Training Providers page.
  - The list of registered training providers will be available to the public on **February 7, 2022**.



The screenshot displays the FMCSA Training Provider Registry website. At the top, there is a navigation bar with the FMCSA logo, a 'Log In' button, and links for 'Email Sign Up', 'Home', 'About', 'FAQs', 'Training Providers', 'Developers', and 'Contact'. The main content area features a 'TRAINING PROVIDERS' header with a 'REGISTER NOW' button. Below this, a section titled 'CDL Training Providers: How To Register' provides a three-step process: 1. Create a login.gov account, 2. Register Training Provider, and 3. Register Training Locations. A 'Ready to get started?' section encourages users to go to login.gov. A 'Registration is Open' banner is also present. The bottom section, 'Why do training providers need to register?', explains the requirements for inclusion in the public list of training providers. A 'Resources for Training Providers' section lists various guides and documents available for download.

United States Department of Transportation  
FMCSA  
Federal Motor Carrier Safety Administration

Log In

Email Sign Up Home About FAQs Training Providers Developers Contact

**TRAINING PROVIDERS**

REGISTER NOW >>

**Training Providers: Register with FMCSA**  
The list of registered training providers will be publicly available later this year.

**CDL Training Providers: How To Register**  
Follow the steps below. For more information, download the Training Provider Registration Guide*.it*.

1 2 3

**Create a login.gov account**  
Training providers will use a login.gov username (email address) and password to access the Training Provider Registry. Providers may create a new account or use an existing login.gov account. [Learn more about login.gov.](#)

**Register Training Provider**  
Select **one person** to register your company or organization with FMCSA. Once approved, this user may *invite other individuals* to register and work in the Registry on behalf of the training provider.

**Register Training Locations**  
Once FMCSA approves the company's registration request, providers can log in to register training locations. Providers with multiple locations will need to register each location.

**Ready to get started?**  
Go to [login.gov](#) and begin your registration

**Registration is Open**

**Why do training providers need to register?**  
Providers must register with FMCSA via the Training Provider Registry to be included on the public list of training providers when it goes live later this year. Beginning February 7, 2022, CDL applicants must complete their entry-level driver training from a training provider listed in the Training Provider Registry to be eligible to take the required commercial driver's license (CDL) skills or knowledge tests. Training providers must also register to electronically submit a driver's certification of successful completion of training, as required by the ELDT regulations.

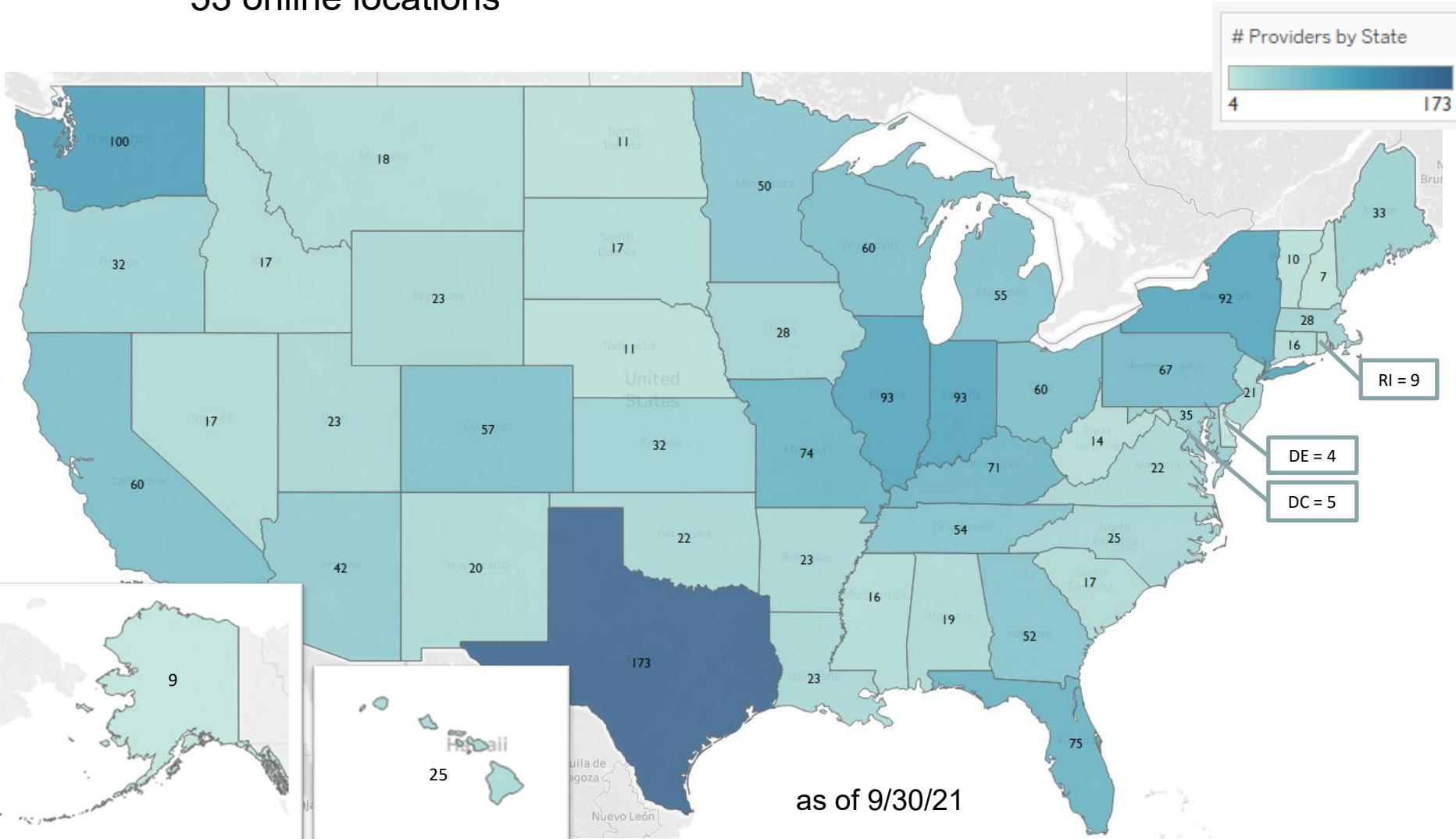
**Only training providers register in the Training Provider Registry.**  
Read below for more information on the ELDT requirements training providers must meet to be eligible to register with FMCSA.

**Resources for Training Providers**

- Training Provider's Guide to ELDT (Interactive)*.it*
- Training Provider TPR Factsheet (PDF)*.it*
- Countdown to ELDT Checklist for Training Providers (PDF)*.it*
- ELDT Curricula Summary (PDF)*.it*
- Entry-Level Driver Training Overview (PPT)

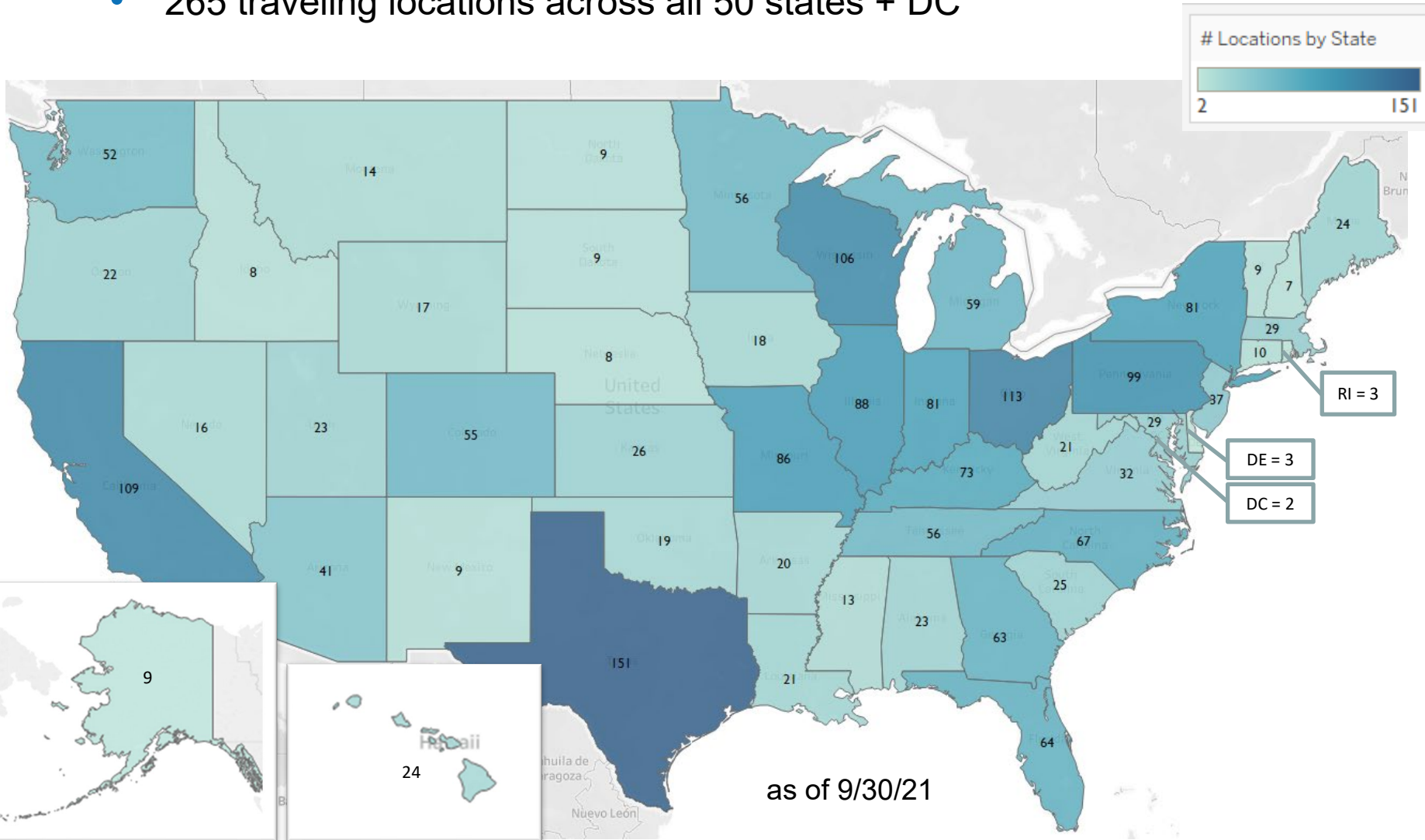
# Program Update: Training Provider Registrations

- Training Provider registrations since 6/28/21 = 1,960
  - 53 online locations



# Training Location Registrations

- Training Locations registrations since 6/28/21 = 2,039
  - 265 traveling locations across all 50 states + DC



---

## Program Update

- ELDT/TPR Team is finalizing guidance based on questions from the CDL Coordinator's Conference
- FMCSA will provide a list of registered training providers to SDLAs on a monthly basis
  - SDLAs may conduct outreach to training providers in your State who have not yet registered



---

# IT Update: Direct Connect SDLA Credentials

- Targeting late October/early November
- Only needed for direct connection to TPR Web Service (not needed if connecting via AAMVA)
  - Request TPR account (login.gov account needed)
  - Download credentials needed for connection:
    - Unique identifier
    - Certificate (used by TPR to verify that message is coming from the State)
    - Private key that pairs with certificate
  - Credentials can be used for testing *and* production
  - **Credentials will not be stored in the system**
    - Download/save for future reference
    - Generate additional credentials as needed

---

# Training Provider Outreach

- Increasing awareness
  - Connecting with potential outreach partners
    - Emails to national associations (CVTA, NAPFTDS)
    - Offering Service Center trainings, Division contacts at State associations
    - State Departments of Education
  - Regular emails to subscriber lists
  - Running paid online advertising campaigns to target training providers; fall campaign to target drivers

Resources for

# Training Providers

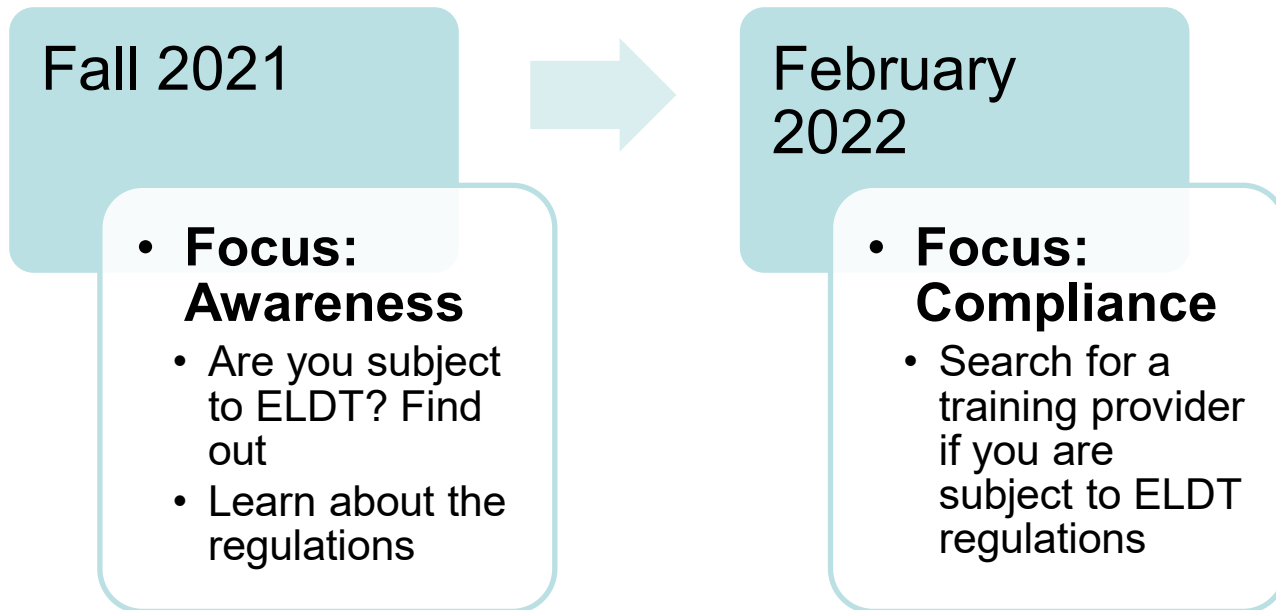
- Currently available on the Training Providers page:  
<https://tpr.fmcsa.dot.gov/Provider>
  - **NEW:** Interactive Q&A on Training Provider Registration
  - **NEW:** Training Provider Registration Guide
  - **COMING SOON:** Registration Demonstration (late October)
  - **COMING SOON:** ELDT Eligibility flowchart (late January)
  - Training Provider's Guide to ELDT (eLearning)
  - Training Provider Registry factsheet
  - TPR Training Provider factsheet
  - ELDT Curricula Summary
  - ELDT Overview PowerPoint
  - "Countdown to ELDT" checklist for Training Providers
  - Training Provider webinar recording (March 4, 2021)

## Resources for

**SDLAs**

- Currently available on the SLDA/Division Resources page:  
<https://tpr.fmcsa.dot.gov/Resource/Open/SDLA-resources>
  - **NEW:** Training Provider Registration Talking Points for SDLAs
  - SDLA regulation reference guide
  - ELDT Outreach PowerPoint template
  - “Countdown to ELDT” checklist for SDLAs
  - Training Provider Registry factsheet
  
- Coming soon:
  - Standard ELDT/Registry messaging for SDLA websites/social media
  - Driver-focused ELDT insert for State CDL manuals (late October)
  - ELDT eligibility job aid for SDLA staff (January 2022)

# Driver Outreach – Coming Soon



---

## Discussion: Training Staff

- Will your staff be ready on February 7, 2022?
- What procedures are you updating?
  - Scheduling
  - Querying/verifying data from Training Provider Registry
- Do you have a training plan?
  - What can FMCSA provide to assist you?

---

# Countdown to ELDT

## What should States do now to prepare for February 7, 2022?

- Finalize and test the IT solution you will use to retrieve data from the Training Provider Registry
- Obtain legislative authority to enforce ELDT regulations in your State
- Audit your State's educational materials and update them to include information about ELDT requirements
- Begin informing and training all skills examiners, including third-party examiners

---

# State Report-Out

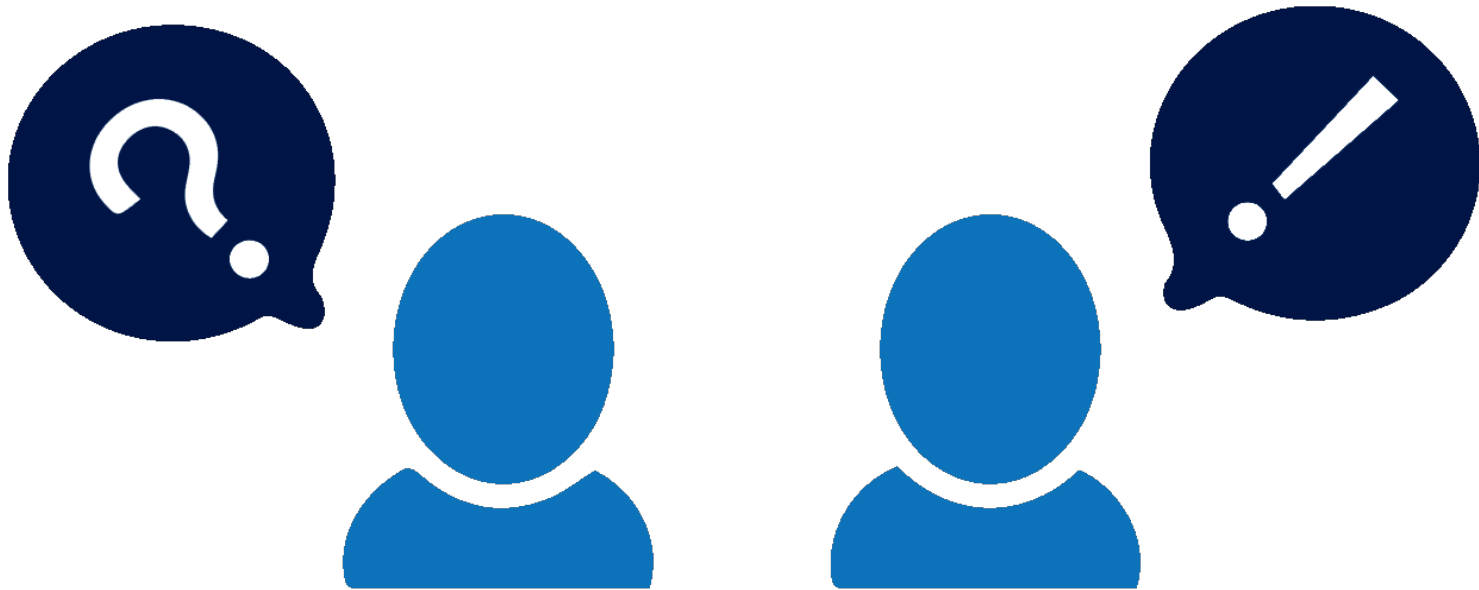
- What have you done so far?
- What do you plan to do next?
- What obstacles/roadblocks do you anticipate?
- What do you need from FMCSA?





---

## Q&A



---

## Where can I get additional details about the rule?



To learn more about ELDT and the Training Provider Registry, visit:

<https://tpr.fmcsa.dot.gov>



**You may also contact:**

Josh Jones | [Joshua.jones@dot.gov](mailto:Joshua.jones@dot.gov)

TPR Team

<https://tpr.fmcsa.dot.gov/#contact>